



**APOLLO™** Pro s4

**Professional video wall processor**

# Product Introduction

Apollo Pro S4 professional video wall processor is Tricolor's newest and best performing equipment. It supports 4K @ 60 Hz ultra-high definition video signal acquisition and transmission with full 4:4:4 chromaticity sampling in the RGB gamut. Utilizing FPGA architecture as well as modular design, Apollo Pro V4 retains Tricolor's traditional stable and reliable operational ability, but at the same time supports various interfaces and business modules for flexible and personalized combination, along with the convenience for future upgrading. The new generation Apollo Pro S4 supports signal preview and monitoring, audio-visual synchronized switching, scrolling caption, authorization management. It is compatible with various types of control interfaces, which makes the system exceptionally user friendly. Tricolor fills the gap between video control and display and brings a marvelous video wall processor with extraordinary management solution.

## Applied Industries



Hydro-power



Business Management



Production Scheduling



Meteorology Surveillance



Public Transportation



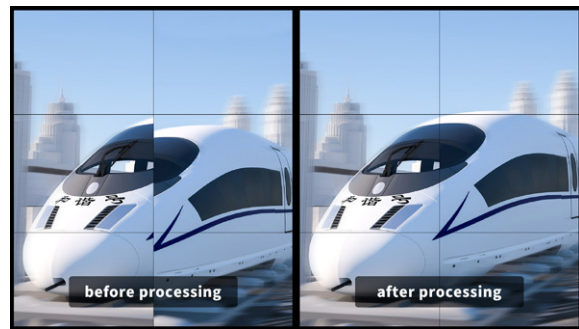
Broadcasting

## Product Features



### 4K@60Hz 4:4:4

Supports 4K ultra high resolution video Input and output, with P2P (Pixel to Pixel) displaying quality. The System also supports any LCD, DLP and LED video display.



### Splicing Synchronization Technology

With Tricolor patented video wall synchronization and frame lock technology, Apollo Pro S4 ensures all output signals are in perfect synchronization. No matter the display unit is LCD, LED, DLP or any other type, Apollo Pro can process the video signal with zero delay.



### LED Irregular Splicing

With high-performance splicing system, Apollo Pro S4 supports control random scale LED wall with irregular splicing. support 4K60Hz resolution input / output, realize pixel-to-pixel display.



### IP Stream Decoding

Apollo Pro S4 supports H.264/AVC and H.265/HEVC decoding. It can work with various IPC brands and encoders. Audio signal also supported.





### High-definition Scrolling Text

Users can customize the banner content, direction, color, speed and style of the scrolling text, support high-definition picture display, can be used for user-defined logo, symbol and other content, without additional software or hardware.



### Tablet Control

Apollo Pro S4 supports remote control by iPad or Android tablet, all signals and video walls can be previewed and control remotely.



### Multi-User and Authorization Control

Supports multi-user simultaneous operation and real-time synchronization. The user authorization can be detailed divided into Screen groups, signals and different user levels.



### Preset Function

Apollo Pro S4 allows more than 1000 presets stored in the device. These preset layouts can be easily accessed and recalled by user which helps control quicker and smarter.



### Real-time Monitoring

This function provides operator 60fps real-time high resolution visual signal for monitoring of whole video wall through HDMI or IP Stream on a single monitor, which brings a better management experience.



### Background Image

Supports high-definition background image function, images can be saved in the device. Support static background picture, display area can freely set, based on a single screen as a unit, will not take window numbers of output port.

## Device Specification

Hardware		Function	
Chassis	4U、6U、10U、16U、24U	Image Splicing	Supports random scale image splicing, roaming, PIP
Input	24(4U), 36(6U), 56(10U), 120(16U), 160(24U)	Image Processing	Supports zoom in/out, up/down scaling
Output	8(4U), 12(6U), 20(10U), 40(16U), 80(24U)	Signal Preview	Supports signal real-time preview as well as audio control
Input Resolution	Max 4096*2160@60Hz	Real-time Monitoring	Supports whole wall 60fps image monitoring.
Output Resolution	Max 4096*2160@60Hz	Graphic Card Input Synchronization	Compatible with NVIDIA Mosaic and AMD Eyefinity technology
Quantity of video wall groups	Max 40 different resolution video wall groups.	Image Cropping	Supports random scale image cropping
Quantity of Windows	Max 8 windows on single monitor	Output Synchronization	Support frame synchronization, effectively eliminate asynchrony of splicing screens
Input		High-definition Background Image	Upload customized size image and can be saved in device
DVI	Single-link 1920x1200@60Hz	Preset	More than 1000 layouts can be saved.
	Dual-link 3840x2400@30Hz, 2560x1600@60Hz	Character Overlay	support input and output signals
HDMI	HDMI 1.3 up to 1920x1080@60Hz, backward compatible, embedded audio	IP Stream	Supports H.265/H.264 standard stream
	HDMI 1.4 up to 3840x2160@30Hz, backward compatible, embedded audio	Web Screen	Support web screen capture
	HDMI 2.0 up to 3840x2160@60Hz, backward compatible, embedded audio	EDID Setting	Supports customized EDID
DisplayPort	DP1.1 up to 3840x2100@30Hz, backward compatible, embedded audio	Scrolling Text	Supports scrolling text with different styles
	DP1.2 up to 4096x2100@60Hz, backward compatible, embedded audio	Multi-user Control	Supports multi-user control in the same time
VGA	up to 1920x1200@60Hz, backward compatible	Operation Log	Supports operation log
SDI	up to 1920x1080@60H, backward compatible, embedded audio	Firmware Update	OTA upgrade supported
IP	H.265/HEVC 2K version, up to 1920x1080@60H, backward compatible	Others	
	H.265/HEVC 4K version, up to 3840x2160@30H, backward compatible	Control Protocol	Tricolor Protocol
CVBS	PAL / NTSC, adaptive	Operation System	Windows/ iOS/ Android
HDBT ①	up to 1920x1200@60Hz, backward compatible, embedded audio	Port	TCP/IP 10/100/1000 Base-T
	up to 3840x1260@30Hz, backward compatible, embedded audio		RJ45 x1, RS 232/485 (RJ45 type), RJ45 × 2
Fiber ②	up to 1920x1200@60Hz, backward compatible, embedded audio	Supply voltage	110 ~ 240V
	up to 3840x1260@30Hz, backward compatible, embedded audio	Shockproof	ISTA 1A Carton
Output		Install	19-inch cabinet with mounting accessories
DVI	Single-link 1920x1200@60Hz	Material	Metal
HDMI	HDMI 1.3 up to 1920x1080@60Hz, backward compatible, embedded audio	Storage Temperature	-20°C ~ 40°C
	HDMI 1.4 up to 3840x2160@30Hz, backward compatible, embedded audio	Relative humidity	20~90 % RH
	HDMI2.0 up to 3840x2160@60Hz, backward compatible, embedded audio	Operating Temperature	0°C ~ 40°C
Fiber ②	up to 1920x1200@60Hz, backward compatible, embedded audio	Note: ① HDBaseT extenders should meets HDBaseT standard and been tested and certified by Tricolor. ② Fiber extender should be tested and certified fiber by Tricolor.	
	up to 3840x1260@30Hz, backward compatible, embedded audio		